

Public transport directions

From the airport to Birkerød Tennis Club:

1. Take any train or metro from the airport going in the direction Hovedbanegård (Central Train Station) where you get off.
2. Take the E-train in the direction "Hillerød" and get off after 25 minutes at Birkerød.
3. Take the bus 338, 537E or 538E in the direction "Blokken" and get off at Topstykket.

From the airport to Farum Park Hotel:

1. Take any train or metro from the airport going in the direction Hovedbanegård where you get off.
2. Take the A-train in the direction "Farum" and get off at the end-station.
3. Walk, or take the bus 333/334 and ask the driver to tell you when to get off.

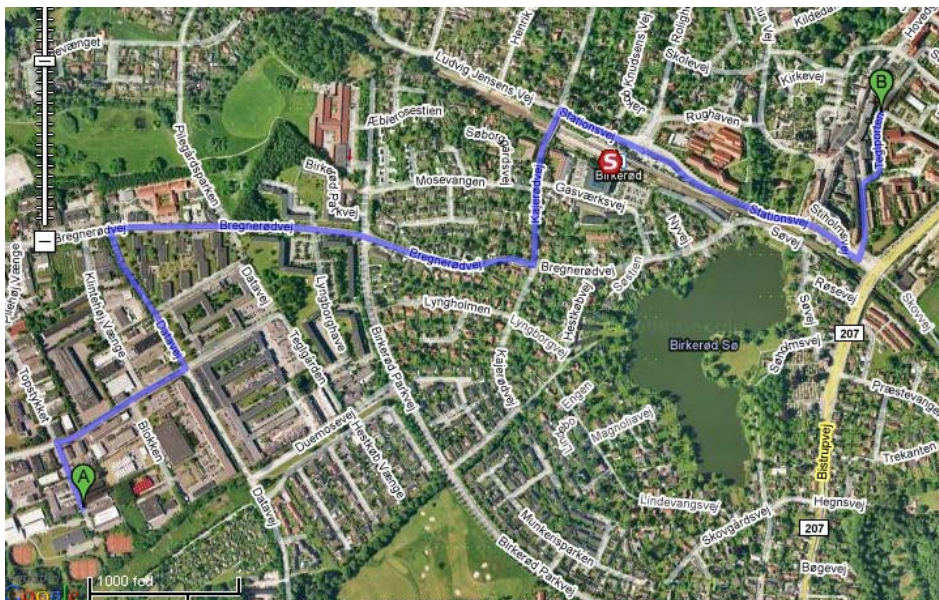
We hope that your participation in the TE Birkerød 2011 will be unforgettable.

TE Birkerød 2011



Information

Location



BTK



**Birkerød centre -
supermarket, bank, etc.**



Railway Station

Look at the back page, contact Player's services in the tent or check www.rejseplanen.dk (and switch language to english) if you seek information regarding public transport.

Facts

- Stringing Service is present all days. The cost is €15/DKK 100 with own string and €20/DKK 150 without. Rackets must be handed in in the tent.
- Practice courts and balls are available (against a deposit)- ask in the tent.
- Entry for doubles must for both girls and boys take place before Tuesday at 12pm.
- Café opening hours: 7am—8pm
- Contact the tent at any time if you have any doubts or problems at all.

Telephone numbers

Pizza delivery: +45 45 81 88 07

Taxi: +45 49 16 35 35

Tournament director: +45 20 75 78 07

Tournament telephone: + 45 23 88 49 03